

The background is an abstract composition of various shapes and colors. It features a base of muted brown and tan tones. Overlaid on this are several large, irregular shapes in a vibrant blue and a soft, off-white color. The shapes are defined by thick, dark brown outlines, giving the impression of layered paper or thick paint strokes. The overall effect is a textured, layered, and somewhat organic abstract design.

Meus Animus

Portfolio Selection

2018-2020

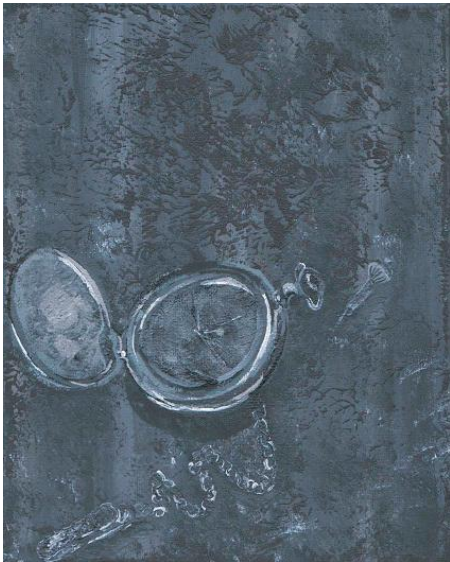
/2019



ala



Gan Cho Dan Sinh



お守り



La Manera



Corazon Espinado



葉脈

/2020



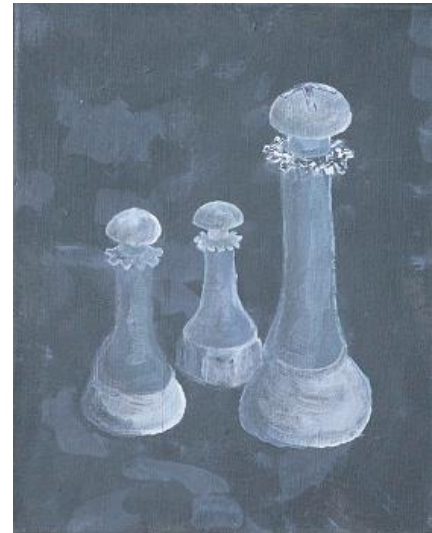
Izquierda Peon



Derecho Peon



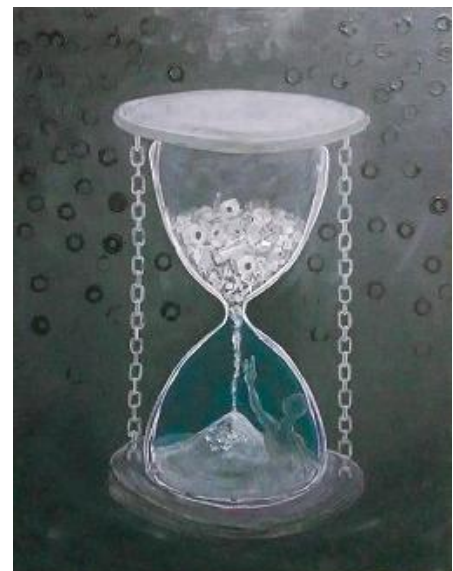
Reina



Trillizo Peon



Rose Grey



時の舟

Portfolio Selection /2018



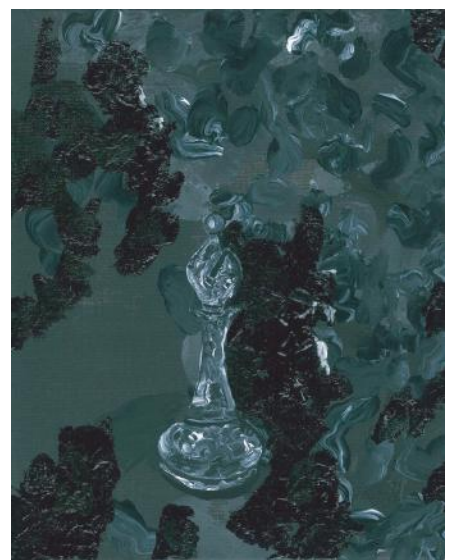
der loffel



Das Gabel



guardian



Bishop



mindgame



Fallen Kingdom